

BALDOR® • RELIANCE 

Product Information Packet

EJMM3212T-G

5HP,3450RPM,3PH,60HZ,182JM,3622M,OPSB,F1

| Part Detail | | | | | | | |
|-------------|--------|-------------|------------|-------------|--------|---------------|------------|
| Revision: | Q | Status: | PRD/A | Change #: | | Proprietary: | No |
| Type: | AC | Elec. Spec: | 36WGS040 | CD Diagram: | CD0005 | Mfg Plant: | |
| Mech. Spec: | 36T140 | Layout: | 36LYT140 | Poles: | 02 | Created Date: | 11-21-2011 |
| Base: | RG | Eff. Date: | 04-08-2019 | Leads: | 9#16 | | |

| Specs | | | |
|---------------------------------|-------------------------|--------------------------------|-----------------|
| Catalog Number: | EJMM3212T-G | Heater Indicator: | No Heater |
| Enclosure: | OPSB | Insulation Class: | H |
| Frame: | 182JM | Inverter Code: | Inverter Ready |
| Frame Material: | Steel | KVA Code: | K |
| Output @ Frequency: | 5.000 HP @ 60 HZ | Lifting Lugs: | No Lifting Lugs |
| Synchronous Speed @ Frequency: | 3600 RPM @ 60 HZ | Locked Bearing Indicator: | Locked Bearing |
| Voltage @ Frequency: | 460.0 V @ 60 HZ | Motor Lead Quantity/Wire Size: | 9 @ 16 AWG |
| | 230.0 V @ 60 HZ | Motor Lead Exit: | Ko Box |
| XP Class and Group: | None | Motor Lead Termination: | Flying Leads |
| XP Division: | Not Applicable | Motor Type: | 3622M |
| Agency Approvals: | UR | Mounting Arrangement: | F1 |
| | CSA EEV | Power Factor: | 91 |
| | CSA | Product Family: | General Purpose |
| Auxillary Box: | No Auxillary Box | Pulley End Bearing Type: | Ball |
| Auxillary Box Lead Termination: | None | Pulley Face Code: | C-Face |
| Base Indicator: | Rigid | Pulley Shaft Indicator: | Tapped & Key |
| Bearing Grease Type: | Polyrex EM (-20F +300F) | Rodent Screen: | Included |
| Blower: | None | Shaft Extension Location: | Pulley End |

| | | | |
|---------------------------------------|---------------------------|------------------------------------|---------------------|
| Current @ Voltage: | 12.000 A @ 230.0 V | Shaft Ground Indicator: | No Shaft Grounding |
| | 12.800 A @ 208.0 V | Shaft Rotation: | Reversible |
| | 6.000 A @ 460.0 V | Shaft Slinger Indicator: | Shaft Slinger |
| Design Code: | A | Speed Code: | Single Speed |
| Drip Cover: | No Drip Cover | Motor Standards: | NEMA |
| Duty Rating: | CONT | Starting Method: | Direct on line |
| Electrically Isolated Bearing: | Not Electrically Isolated | Thermal Device - Bearing: | None |
| Feedback Device: | NO FEEDBACK | Thermal Device - Winding: | None |
| Front Face Code: | Standard | Vibration Sensor Indicator: | No Vibration Sensor |
| Front Shaft Indicator: | None | Winding Thermal 1: | None |
| | | Winding Thermal 2: | None |

Nameplate NP3553LUA

| | | | | | | | | |
|---------------------------|-----------------------------|--|----------------|------|-----|----|-------|---|
| CAT.NO. | EJMM3212T-G | | | | | | | |
| SPEC. | 36T140S040G1 | | | | | | | |
| HP | 5 | | | | | | | |
| VOLTS | 230/460 | | | | | | | |
| AMPS | 12/6 | | | | | | | |
| RPM | 3450 | | | | | | | |
| FRAME | 182JM | | HZ | 60 | | PH | 3 | |
| SF | 1.15 | | CODE | K | DES | A | CLASS | H |
| NEMA NOM. EFF | 86.5 | | PF | 91 | | | | |
| RATING | 40C AMB-CONT | | | | | | | |
| CC | 010A | | USABLE AT 208V | | | | 12.8 | |
| DE | 6207 | | ODE | 6205 | | | | |
| ENCL | OPSB | | SN | | | | | |
| VPWM INVERTER READY | | | | | | | | |
| CT30-60(2:1) VT3-60(20:1) | | | | | | | | |
| USABLE AT | 50Hz 5HP 190/380V 14.6/7.3A | | | | | | SF1.0 | |

| Parts List | | |
|-------------|--|----------|
| Part Number | Description | Quantity |
| SA234663 | SA 36T140S040G1 | 1.000 EA |
| RA221634 | RA 36T140S040G1 | 1.000 EA |
| 36CB3000SP | CONDUIT BOX, CAST | 1.000 EA |
| 51XB1016A07 | 10-16 X 7/16 HXWSSLD SERTYB | 2.000 EA |
| 11XW1032G06 | 10-32 X .38, TAPTITE II, HEX WSHR SLTD U | 1.000 EA |
| HW3001B01 | BRASS CUP WASHER, FOR #10 SCREW | 1.000 EA |
| 36EP3204D00 | MASTER ODE,205 BRG,GRSR,RLF | 1.000 EA |
| HA1103A08 | RODENT SCREEN, 36 FRAME, OPEN, FRONT END | 1.000 EA |
| 51XW1032A06 | 10-32 X .38, TAPTITE II, HEX WSHR SLTD S | 4.000 EA |
| HW1000A10 | #10 FLAT WASHER (SAE) | 4.000 EA |
| HW4500A01 | 1641B(ALEMITE)400 UNIV, GREASE FITT | 1.000 EA |
| HW4500A17 | 317400 ALEMITE GREASE RELIEF | 1.000 EA |
| HW5100A05 | WVY WSHR F/205 & 304 BRGS | 1.000 EA |
| 10XN2520A24 | 1/4-20X 1 1/2 HEX HD X | 4.000 EA |
| HW1001A25 | LOCKWASHER 1/4, ZINC PLT .493 OD, .255 I | 4.000 EA |
| 36PE3405A04 | PUEP 182-4C OPEN 207 BRG W/ TSLV, GR SR | 1.000 EA |
| HA1102A07 | RODENT SCREEN 36 OPEN FACE | 2.000 EA |
| 51XW1032A06 | 10-32 X .38, TAPTITE II, HEX WSHR SLTD S | 4.000 EA |
| HW1000A10 | #10 FLAT WASHER (SAE) | 4.000 EA |
| HW4500A01 | 1641B(ALEMITE)400 UNIV, GREASE FITT | 1.000 EA |
| HW4500A17 | 317400 ALEMITE GREASE RELIEF | 1.000 EA |
| 35CB4514 | 35 LIPPED CB LID | 1.000 EA |
| 51XW0832A07 | 8-32 X .44, TAPTITE II, HEX WSHR SLTD SE | 4.000 EA |
| HA1005A07 | SLINGER, OD 2.25, ID 1.344, 307 BRG | 1.000 EA |

| Parts List (continued) | | |
|-------------------------------|--|-----------------|
| Part Number | Description | Quantity |
| HW2501D15 | KEY, 3/16 X 1.625 | 1.000 EA |
| HA7000A01 | KEY RETAINER 7/8" DIA SHAFT | 1.000 EA |
| 85XU0407S04 | 4X1/4 U DRIVE PIN STAINLESS | 2.000 EA |
| LB1459 | AEGIS SGR LABEL "AEGISLBL-100" | 1.000 EA |
| MJ1000A02 | GREASE, MOBIL POLYREX EM - 124047 | 0.050 LB |
| MG1000Y03 | MUNSELL 2.53Y 6.70/ 4.60, GLOSS 20, | 0.022 GA |
| HA3101A23 | THRUBOLT 1/4-20 X 9.625 DEMBY | 4.000 EA |
| 36AD2004A01 | BAFFLE PLATE,MOD 36-SLTD BAND MTRS DELTA | 2.000 EA |
| LC0005E01 | CONN.DIA./WARNING LABEL (LC0005/LB1119N) | 1.000 EA |
| NP3553LUA | ALUM SUPER-E VPWM INVERTER READY UL | 1.000 EA |
| 36PA1001 | PKG GRP, PRINT PK1017A06 | 1.000 EA |
| MN416A01 | TAG-INSTAL-MAINT no wire (1200/bx) 3/19 | 1.000 EA |
| FE-0000001 | ZRTG FE ASSEMBLY | 1.000 EA |

AC Induction Motor Performance Data

Record # 53355 - Typical performance - not guaranteed values

| | | |
|-------------------------------|--------------------|------------------------|
| Winding: 36WGS040-R015 | Type: 3622M | Enclosure: OPSB |
|-------------------------------|--------------------|------------------------|

| Nameplate Data | | | | 460 V, 60 Hz: High Voltage Connection | |
|-----------------------|--------------|--------------|----|--|---------------------------|
| Rated Output (HP) | 5 | | | Full Load Torque | 7.66 LB-FT |
| Volts | 230/460 | | | Start Configuration | direct on line |
| Full Load Amps | 12/6 | | | Breakdown Torque | 29.99 LB-FT |
| R.P.M. | 3450 | | | Pull-up Torque | 17.89 LB-FT |
| Hz | 60 | Phase | 3 | Locked-rotor Torque | 22.24 LB-FT |
| NEMA Design Code | A | KVA Code | K | Starting Current | 49.63 A |
| Service Factor (S.F.) | 1.15 | | | No-load Current | 1.99 A |
| NEMA Nom. Eff. | 86.5 | Power Factor | 91 | Line-line Res. @ 25°C | 3.07 Ω |
| Rating - Duty | 40C AMB-CONT | | | Temp. Rise @ Rated Load | 34°C |
| S.F. Amps | | | | Temp. Rise @ S.F. Load | 42°C |
| | | | | Locked-rotor Power Factor | 49.2 |
| | | | | Rotor inertia | 0.0988 LB-FT ² |

Load Characteristics 460 V, 60 Hz, 5 HP

| % of Rated Load | 25 | 50 | 75 | 100 | 125 | 150 | S.F. |
|-----------------|------|------|------|------|------|------|------|
| Power Factor | 61 | 79 | 87 | 90 | 92 | 93 | 92 |
| Efficiency | 81.4 | 86.5 | 87.6 | 86.6 | 85.3 | 83.5 | 86.1 |
| Speed | 3566 | 3535 | 3503 | 3465 | 3423 | 3379 | 3445 |
| Line amperes | 2.5 | 3.49 | 4.68 | 6.06 | 7.56 | 9.15 | 6.91 |

Performance Graph at 460V, 60Hz, 5.0HP Typical performance - Not guaranteed values

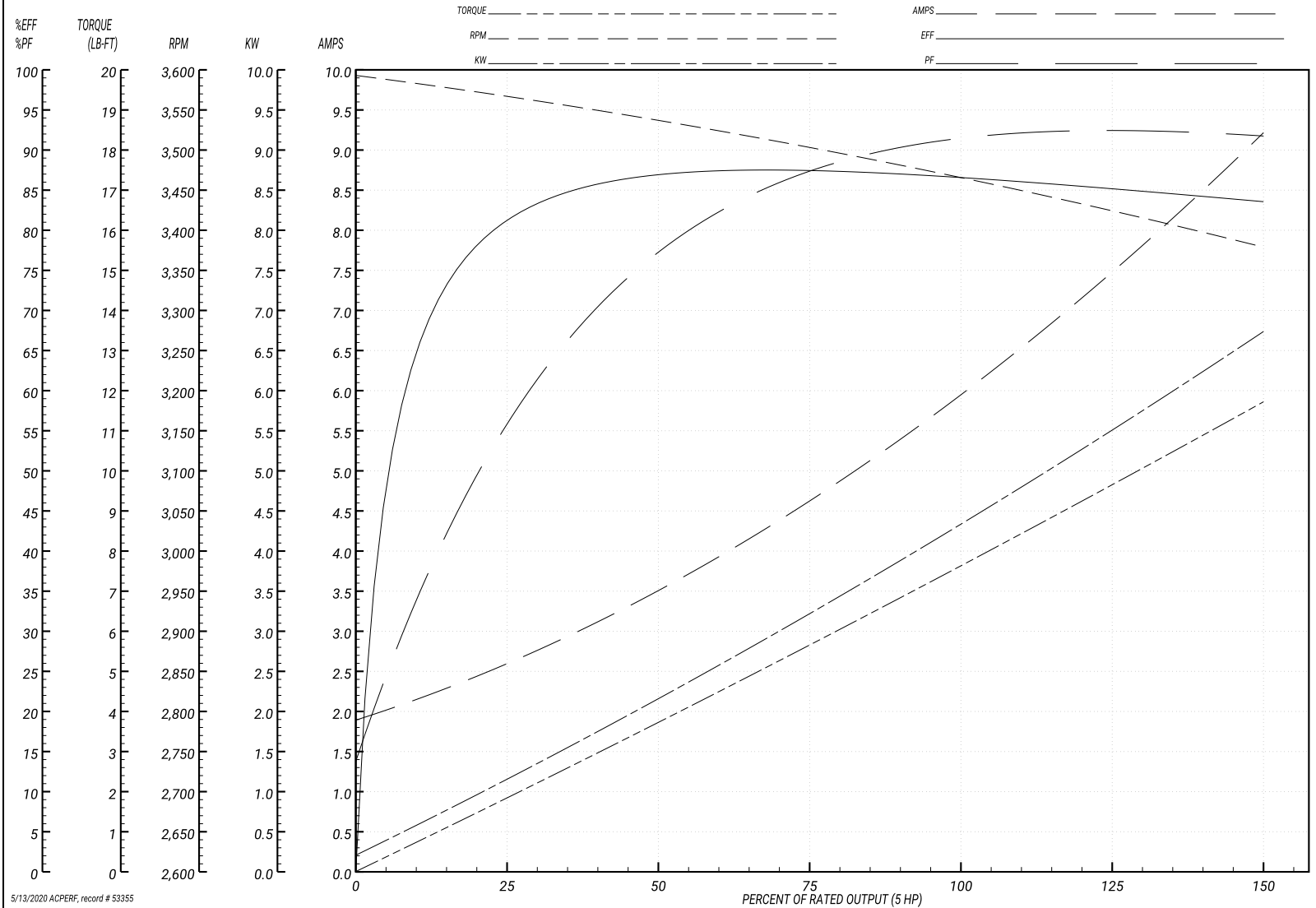
ABB Motors and Mechanical Inc.

WINDING # 36WGS040

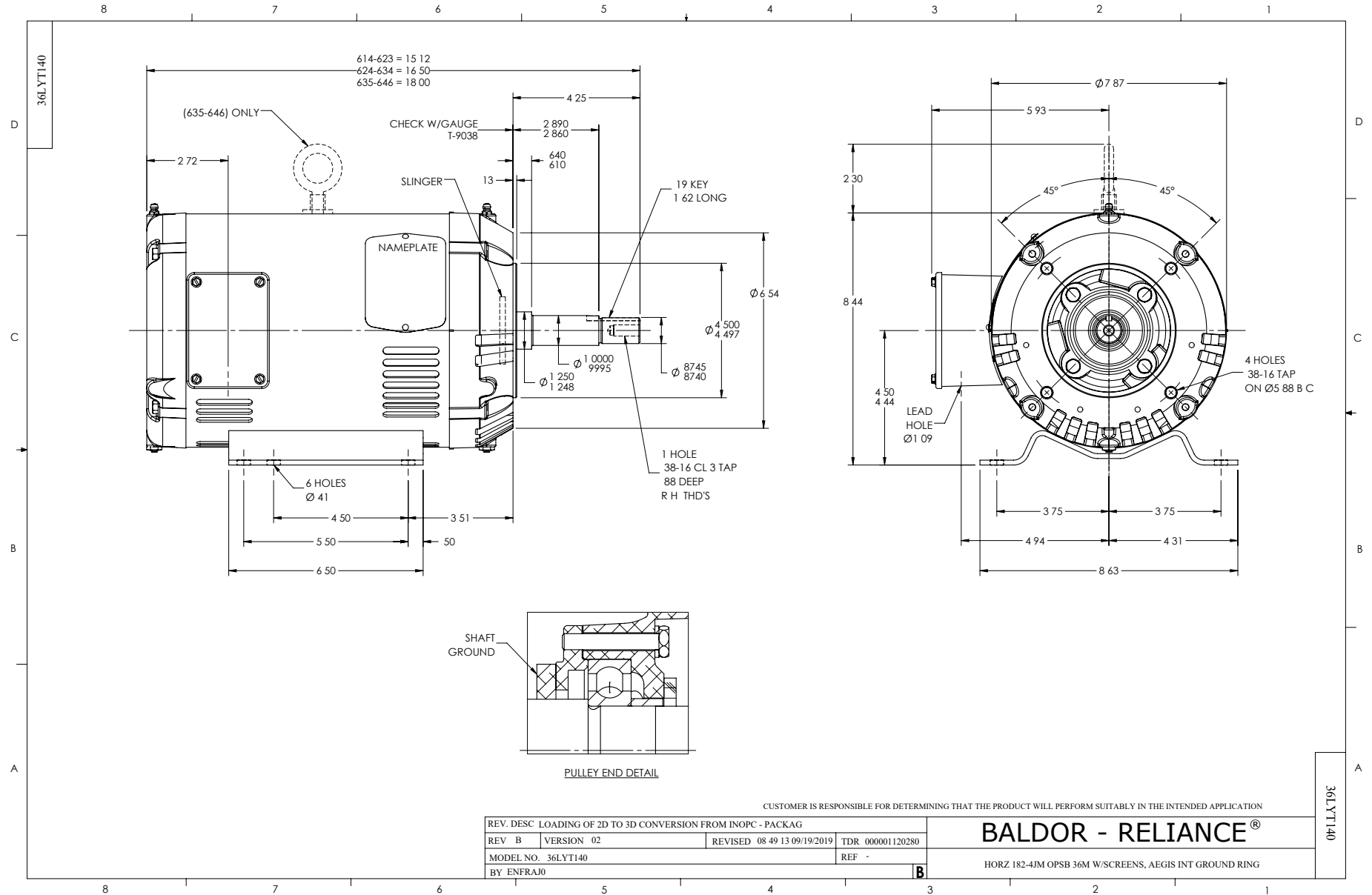
Typical performance - not guaranteed values.

5 HP 3 PH 60 HZ 3450 RPM 460 V 3622M

TORQUES(LB-FT): PO=29.99 PU=17.89 LR=22.24 LRA=49.63



5/13/2020 ACPERF, record # 53355



CD0005



LOW VOLTAGE
(2Y)



LINE

HIGH VOLTAGE
(1Y)



LINE

NOTES:

1. INTERCHANGE ANY TWO LINE LEADS TO REVERSE ROTATION.
2. OPTIONAL THERMOSTATS ARE PROVIDED WHEN SPECIFIED.
3. ACTUAL NUMBER OF INTERNAL PARALLEL CIRCUITS MAY BE A MULTIPLE OF THOSE SHOWN ABOVE.
4. LEAD COLORS ARE OPTIONAL. LEADS MUST ALWAYS BE NUMBERED AS SHOWN.

| | | | |
|---|---------|-------------------------|--------------|
| REV. DESC: REVISE TO SHOW OPTIONAL COLORS | | | |
| REV. LTR: E | BY: JLP | REVISED: 01/19/99 10:15 | TDR: 0171435 |
| 900000 | | FILE: AAA00005140 | MDL: - |
| | | MTL: - | |

BALDOR ELECTRIC Co.

3PH, DV, 9 LEADS

CD0005